



# Historic Loose Mansion Event Facility

101 E. Armour Boulevard, Kansas City, Missouri



## Sale Price: \$4,300,000 (includes RE & Business)

### DEMOGRAPHICS

	1 mile	3 miles	5 miles
Estimated Population	18,605	117,761	268,608
Avg. Household Income	\$67,738	\$75,837	\$77,729

- 18,404 SF of Buildings on .54 acres
- Unique opportunity to own a piece of the Kansas City History
- Beautiful upgrades completed
- Property includes main building (16,204 SF) and Carriage House (2,200 SF)
- Offering includes business with all FF&E along with bookings
- Full liquor license in place
- Call for more details



CLICK HERE TO VIEW MORE LISTING INFORMATION

For More Information Contact:

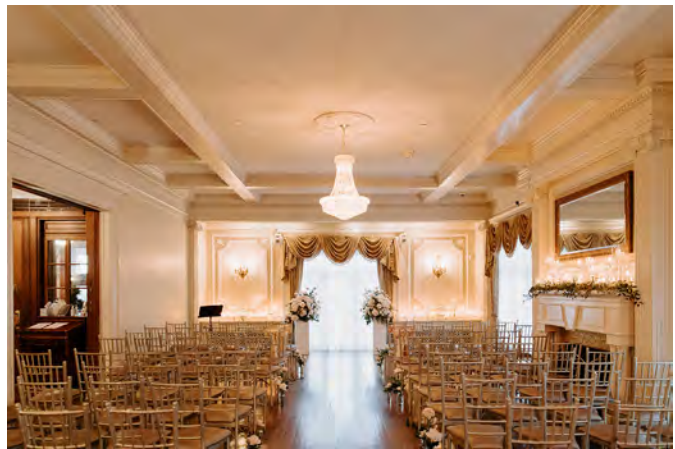
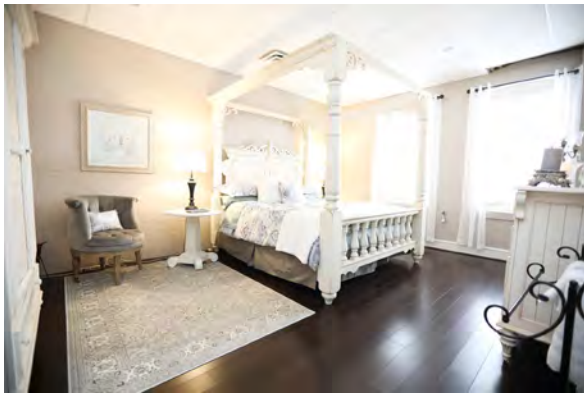
PHIL PECK, CCIM | 816.412.7386 | [ppeck@blockandco.com](mailto:ppeck@blockandco.com)

DAVID BLOCK | 816.412.7400 | [dblock@blockandco.com](mailto:dblock@blockandco.com)

Exclusive Agents

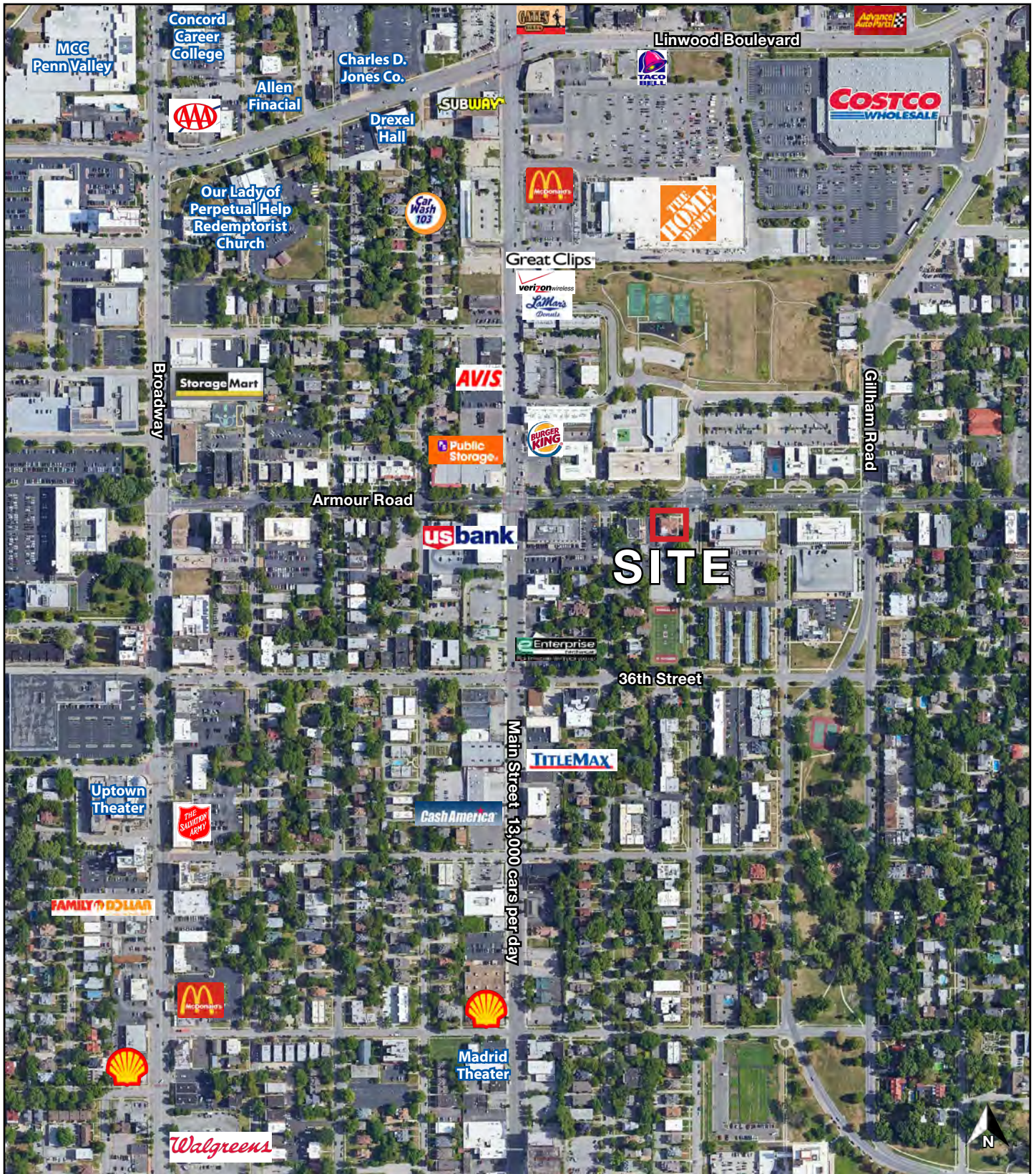


## PHOTOS



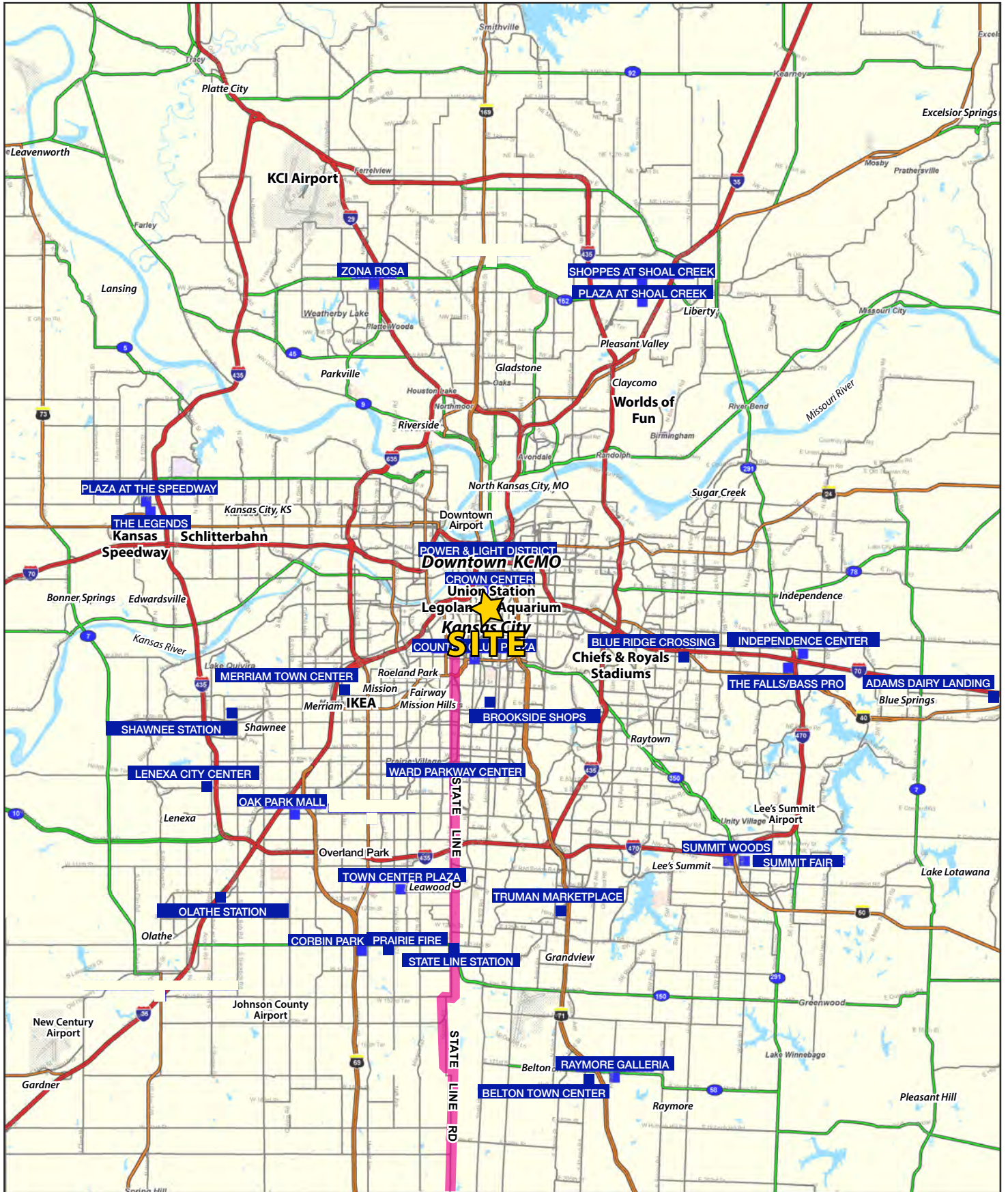
 [CLICK HERE TO VIEW MORE PHOTOS](#)

## AERIAL



# Historic Loose Mansion Event Facility

101 E. Armour Boulevard, Kansas City, Missouri







# Historic Loose Mansion Event Facility

101 E. Armour Boulevard, Kansas City, Missouri

101 E Armour Blvd Kansas City, MO 64111	1 mi radius	3 mi radius	5 mi radius
<b>Population</b>			
2022 Estimated Population	18,605	117,761	268,608
2027 Projected Population	19,134	120,046	272,278
2020 Census Population	18,516	115,275	266,294
2010 Census Population	16,980	105,645	251,987
Projected Annual Growth 2022 to 2027	0.6%	0.4%	0.3%
Historical Annual Growth 2010 to 2022	0.8%	1.0%	0.5%
2022 Median Age	39.0	36.9	35.3
<b>Households</b>			
2022 Estimated Households	10,324	56,393	115,679
2027 Projected Households	10,576	57,491	117,152
2020 Census Households	10,298	56,145	115,550
2010 Census Households	9,257	49,805	106,689
Projected Annual Growth 2022 to 2027	0.5%	0.4%	0.3%
Historical Annual Growth 2010 to 2022	1.0%	1.1%	0.7%
<b>Race and Ethnicity</b>			
2022 Estimated White	63.2%	50.3%	47.8%
2022 Estimated Black or African American	19.1%	29.8%	26.0%
2022 Estimated Asian or Pacific Islander	3.4%	4.3%	4.1%
2022 Estimated American Indian or Native Alaskan	0.6%	0.7%	0.8%
2022 Estimated Other Races	13.8%	14.8%	21.2%
2022 Estimated Hispanic	11.3%	14.2%	22.2%
<b>Income</b>			
2022 Estimated Average Household Income	\$67,738	\$75,837	\$77,729
2022 Estimated Median Household Income	\$53,138	\$57,010	\$58,616
2022 Estimated Per Capita Income	\$37,869	\$36,780	\$33,782
<b>Education (Age 25+)</b>			
2022 Estimated Elementary (Grade Level 0 to 8)	3.2%	3.2%	5.7%
2022 Estimated Some High School (Grade Level 9 to 11)	5.1%	6.4%	7.8%
2022 Estimated High School Graduate	17.7%	22.7%	24.4%
2022 Estimated Some College	15.9%	18.0%	18.4%
2022 Estimated Associates Degree Only	4.5%	5.6%	5.7%
2022 Estimated Bachelors Degree Only	32.4%	25.7%	22.2%
2022 Estimated Graduate Degree	21.1%	18.4%	15.7%
<b>Business</b>			
2022 Estimated Total Businesses	1,390	8,458	13,900
2022 Estimated Total Employees	19,570	176,845	248,459
2022 Estimated Employee Population per Business	14.1	20.9	17.9
2022 Estimated Residential Population per Business	13.4	13.9	19.3

©2022. Sites USA. Chandler, Arizona. 480-491-1112 Demographic Source: Applied Geographic Solutions 6/2022. TIGER Geographv - RS1

